



GMT MONTHLY MEMBERSHIP PROGRESS REPORT

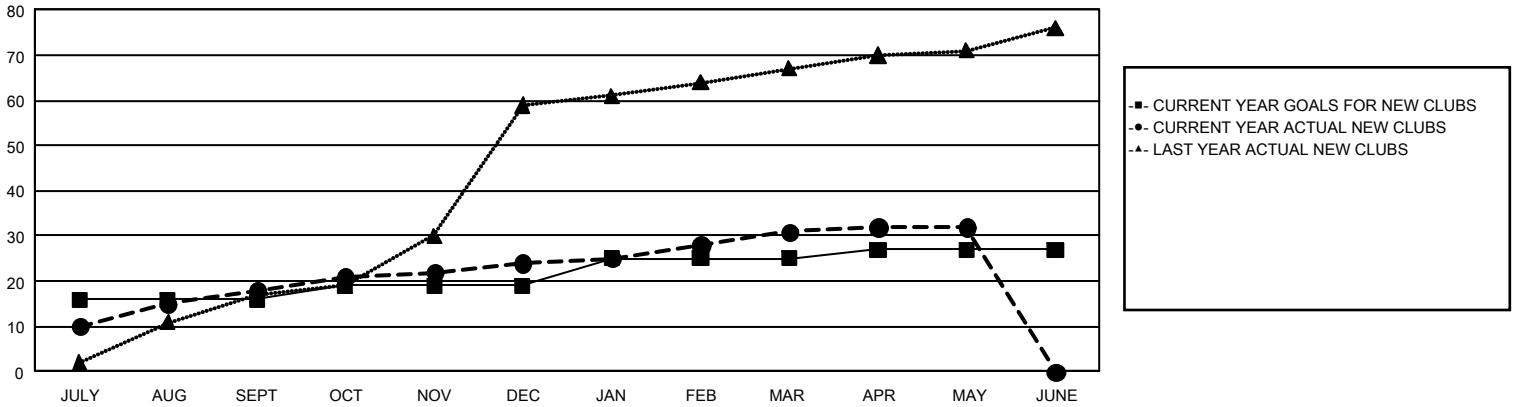
GAT Constitutional Area 5 - MD 300 Taiwan

Results as of: 5/31/2026

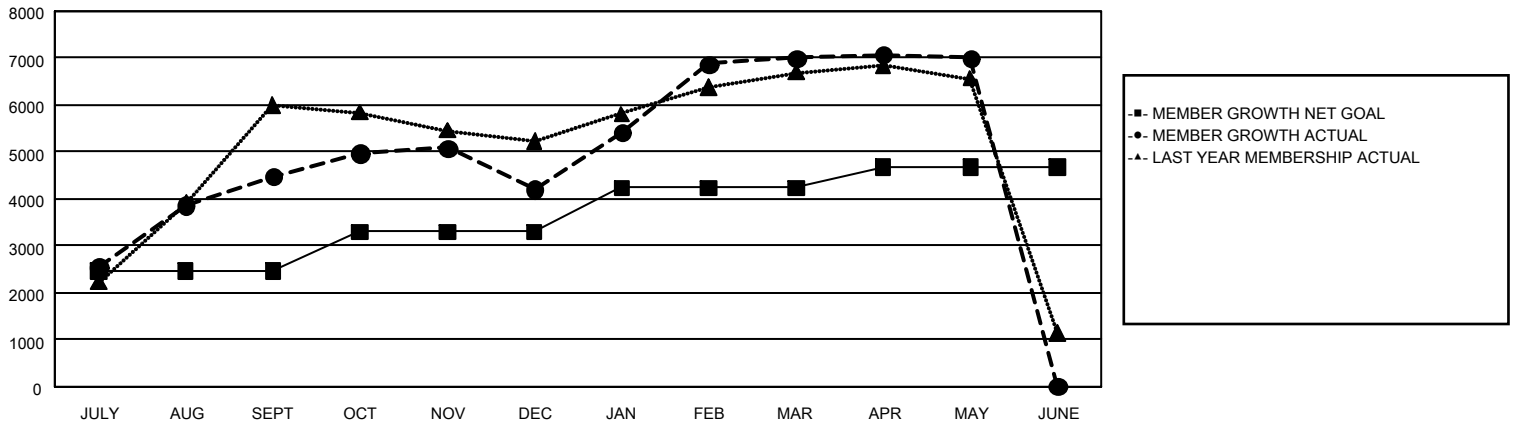
REPORT DOES NOT INCLUDE CLUBS IN UNDISTRICTED AREAS.

| Clubs | | | | Members | | | |
|-----------------------|---------------|-----------|---------------|-----------------------|------------------------|----------------------|--|
| RESULTS FOR 2025-2026 | | | | RESULTS FOR 2025-2026 | | | |
| QUARTER | NEW CLUB GOAL | NEW CLUBS | DROPPED CLUBS | QUARTER | MEMBER GROWTH NET GOAL | MEMBER GROWTH ACTUAL | DROPPED MEMBERS ACTUAL (including transfers) |
| JULY/AUG/SEPT | 16 | 18 | 3 | JULY/AUG/SEPT | 2,466 | 5,683 | 717 |
| OCT/NOV/DEC | 3 | 6 | 4 | OCT/NOV/DEC | 836 | 1,322 | 1,464 |
| JAN/FEB/MAR | 6 | 7 | 3 | JAN/FEB/MAR | 938 | 4,313 | 1,308 |
| APR/MAY/JUNE | 2 | 1 | 0 | APR/MAY/JUNE | 430 | 264 | 230 |

GOALS AND ACTUAL NEW CLUBS CUMULATIVE



GOALS AND ACTUAL MEMBERS CUMULATIVE



| | | | |
|---|--|---------------------------------|-----------------|
| DROPPED CLUBS: 10 | 1,134 CLUBS OF 1,292 ADDED 1 OR MORE NEW MEMBERS | <u>GENDER DISTRIBUTION</u> | |
| <u>DROPPED MEMBERS</u> | | MALE | 32,081 (64.75%) |
| DECEASED | 80 | FEMALE | 17,451 (35.22%) |
| CLUB CANCELLED | 25 | TOTAL FAMILY UNIT MEMBERS 5,054 | |
| OTHER | 3,614 | | |
| TOTAL | 3,719 | | |
| CLICK HERE FOR CUMULATIVE MEMBERSHIP DATA | | | |
| | | | |